



Lista de Precios

Vigente 05 de Abril de 2010

OFICINA

Calle 1 La Yaguara. Antimano. Apto.5437
Carmelitas. Caracas.
TLF. 0212 – 471.0070 / 0212 - 285.3603

PLANTA

Prolongación Av.Bolivar. Ocumare de Tuy.
TLF. 0239 – 225.1645 / 225.1465

Los precios no incluyen IVA.

Tuberías

Tubería ExE x 6 mts. (*)



| Código | Diámetro | RDE | Presión | Empaque | Precio |
|--------|----------|------|---------|---------|--------|
| T14016 | 1/2" | 9 | 500 psi | 10 | 48,14 |
| T14026 | 3/4" | 11 | 400 psi | 10 | 63,46 |
| T14036 | 1" | 13,5 | 315 psi | 10 | 84,15 |
| T14076 | 1 1/2" | 17 | 250 psi | 1 | 144,22 |
| T14066 | 2" | 17 | 250 psi | 1 | 227,77 |

(*)Norma COVENIN 518 - 2 / ASTM D2241

Tubería SCH 80 Roscada 6 mts. (*)



| Código | Diámetro | Empaque | Precio |
|----------|----------|---------|--------|
| T04016AZ | 1/2" | 10 | 47,19 |
| T04026AZ | 3/4" | 5 | 64,13 |

(*)Rosca x Rosca Color Azul

Tubería SCH 80 Roscada 6 mts. (*)

| Código | Diámetro | Empaque | Precio |
|--------|----------|---------|--------|
| T04016 | 1/2" | 10 | 47,19 |
| T04026 | 3/4" | 5 | 64,13 |



(*)Rosca x Rosca Color Gris

Conexiones SCH 40

Codo 90 (GERFOR)



| Código | Diámetro | Empaque | Precio |
|----------|----------|---------|--------|
| C020101G | 1/2" | 400 | 1,50 |
| C020102G | 3/4" | 200 | 2,13 |
| C020103G | 1" | 150 | 4,18 |
| C020305G | 1 1/2" | 50 | 9,91 |
| C020306G | 2" | 35 | 14,94 |

Codo 45 (GERFOR)



| Código | Diámetro | Empaque | Precio |
|----------|----------|---------|--------|
| C010101G | 1/2" | 500 | 2,59 |
| C010102G | 3/4" | 400 | 3,27 |
| C010103G | 1" | 250 | 4,90 |

Tee (GERFOR)



| Código | Diámetro | Empaque | Precio |
|----------|----------|---------|--------|
| C050101G | 1/2" | 300 | 1,80 |
| C050102G | 3/4" | 200 | 3,42 |
| C050103G | 1" | 50 | 5,84 |
| C050105G | 1 1/2" | 20 | 16,61 |
| C050106G | 2" | 10 | 17,76 |

Adaptador Macho (GERFOR)



| Código | Diámetro | Empaque | Precio |
|----------|----------|---------|--------|
| C340101G | 1/2" | 800 | 1,06 |
| C340102G | 3/4" | 600 | 1,48 |
| C340103G | 1" | 300 | 2,80 |
| C340105G | 1 1/2" | 100 | 6,50 |
| C340106G | 2" | 50 | 7,57 |

Adaptador Hembra (GERFOR)



| Código | Diámetro | Empaque | Precio |
|----------|----------|---------|--------|
| C340201G | 1/2" | 700 | 1,42 |
| C340202G | 3/4" | 500 | 2,07 |
| C340203G | 1" | 250 | 3,60 |

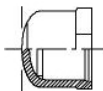
Tee Reducida (GERFOR)



| Código | Diámetro | Empaque | Precio |
|----------|----------|---------|--------|
| C062232G | 1"x1/2" | 150 | 6,08 |
| C062233G | 1"x3/4" | 150 | 6,58 |

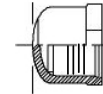
Tapón Soldado (GERFOR)

| Código | Diámetro | Empaque | Precio |
|----------|----------|---------|--------|
| C600201G | 1/2" | 500 | 1,42 |
| C600202G | 3/4" | 350 | 1,85 |
| C600203G | 1" | 180 | 2,77 |
| C600205G | 1 1/2" | 80 | 5,22 |
| C600206G | 2" | 50 | 9,61 |



Tapón Roscado (GERFOR)

| Código | Diámetro | Empaque | Precio |
|----------|----------|---------|--------|
| C600101G | 1/2" | 500 | 1,42 |
| C600102G | 3/4" | 300 | 2,62 |
| C600103G | 1" | 180 | 3,94 |



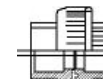
Unión (GERFOR)

| Código | Diámetro | Empaque | Precio |
|----------|----------|---------|--------|
| C160301G | 1/2" | 700 | 1,35 |
| C160302G | 3/4" | 400 | 2,04 |
| C160303G | 1" | 300 | 3,19 |
| C160405G | 1 1/2" | 90 | 5,28 |
| C160406G | 2" | 50 | 8,20 |



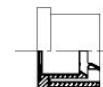
Unión Universal (GERFOR)

| Código | Diámetro | Empaque | Precio |
|----------|----------|---------|--------|
| C220101G | 1/2" | 90 | 10,26 |
| C220102G | 3/4" | 50 | 14,13 |
| C220103G | 1" | 40 | 21,02 |
| C220105G | 1 1/2" | 35 | 37,40 |
| C220106G | 2" | 20 | 48,88 |



Reducción Soldada (GERFOR)

| Código | Diámetro | Empaque | Precio |
|----------|-------------|---------|--------|
| C770201G | 3/4"x1/2" | 400 | 0,85 |
| C770202G | 1"x1/2" | 250 | 1,47 |
| C770203G | 1"x3/4" | 250 | 1,81 |
| C770237G | 1 1/2" x 1" | 200 | 5,38 |
| C770243G | 2"x1" | 50 | 7,10 |
| C770240G | 2"x 1 1/2" | 50 | 8,56 |



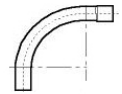
Tubería CxE 3 mts (*)



| Código | Diámetro | Empaque | Precio |
|--------|----------|---------|--------|
| T21013 | 1/2" | 24 | 14,98 |
| T21023 | 3/4" | 24 | 19,06 |
| T21033 | 1" | 24 | 24,24 |
| T21053 | 1 1/2" | 1 | 46,38 |
| T21063 | 2" | 1 | 72,67 |

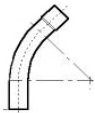
(*)Especificación ASTM D-1784, NEMA TC2

Curva 90° CxE



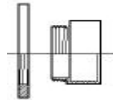
| Código | Diámetro | Empaque | Precio |
|---------|----------|---------|--------|
| C240801 | 1/2" | 300 | 3,66 |
| C240802 | 3/4" | 200 | 5,05 |
| C240803 | 1" | 100 | 7,71 |
| C240805 | 1 1/2" | 50 | 21,86 |
| C240806 | 2" | 25 | 41,86 |

Curva 45° CxE



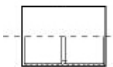
| Código | Diámetro | Empaque | Precio |
|---------|----------|---------|--------|
| C240901 | 1/2" | 300 | 3,66 |
| C240902 | 3/4" | 200 | 5,05 |
| C240903 | 1" | 100 | 7,71 |

Adaptador Terminal



| Código | Diámetro | Empaque | Precio |
|---------|----------|---------|--------|
| C340401 | 1/2" | 700 | 0,97 |
| C340402 | 3/4" | 480 | 1,45 |
| C340403 | 1" | 250 | 1,70 |

Unión Conduit



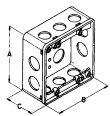
| Código | Diámetro | Empaque | Precio |
|---------|----------|---------|--------|
| C161101 | 1/2" | 600 | 1,42 |
| C161102 | 3/4" | 320 | 1,68 |
| C161103 | 1" | 170 | 2,69 |

Caja Sencilla



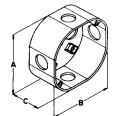
| Código | Tamaño | Empaque | Precio |
|---------|--------|---------|--------|
| C800461 | 2"x4" | 135 | 5,67 |

Caja Doble



| Código | Diámetro | Empaque | Precio |
|---------|----------|---------|--------|
| C800663 | 4"x4" | 65 | 9,45 |

Caja Octagonal



| Código | Tamaño | Empaque | Precio |
|---------|-----------|---------|--------|
| C800562 | Octagonal | 70 | 6,38 |

Nuevo

Sanitaria Norma DIN

Tubería Norma DIN CxE x 3 mts. (*)



| Código | Diámetro | Espesor | Precio |
|--------|----------|---------|--------|
| T02183 | 50 | 1,8 | 28,10 |
| T02203 | 75 | 1,8 | 42,54 |
| T02243 | 110 | 2,2 | 73,28 |
| T02263 | 160 | 3,2 | 173,23 |
| T02273 | 200 | 4,0 | 271,07 |
| T02283 | 250 | 4,9 | 417,49 |

(*) Norma COVENIN 656. Tipo A. Color Amarillo

Conexiones Sanitarias Estándar (Color Amarillo)

Codo 45 CxE



| Código | Diáx esp | Empaque | Precio |
|---------|----------|---------|--------|
| C010018 | 50x1,8 | 200 | 3,37 |
| C010020 | 75x1,8 | 80 | 5,62 |
| C010024 | 110x2,2 | 35 | 11,38 |

Codo 90 CxE



| Código | Diáx esp | Empaque | Precio |
|----------|----------|---------|--------|
| C020018S | 50x3,2 | 180 | 3,66 |
| C020020S | 75x3,2 | 60 | 6,60 |
| C020024S | 110x3,2 | 24 | 12,67 |

Tee ExCxC



| Código | Diáx esp | Empaque | Precio |
|----------|----------|---------|--------|
| C050018S | 50x3,2 | 100 | 5,48 |
| C050020S | 75x1,8 | 35 | 11,89 |
| C050024S | 110x2,2 | 10 | 22,18 |

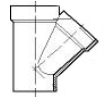
Tee Reducida ExCxC



| Código | Diámetro | Empaque | Precio |
|----------|----------|---------|--------|
| C060050S | 75x50 | 40 | 11,25 |
| C060061S | 110x50 | 14 | 18,33 |
| C060063S | 110x75 | 10 | 19,35 |

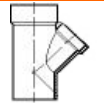
Yee ExCxC

| Código | Diáx esp | Empaque | Precio |
|----------|----------|---------|--------|
| C100018S | 50x3,2 | 80 | 6,83 |
| C100020S | 75x3,2 | 28 | 10,67 |
| C100024S | 110x3,2 | 8 | 23,64 |



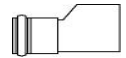
Yee Reducida ExCxC

| Código | Diámetro | Empaque | Precio |
|----------|----------|---------|--------|
| C110050S | 75x50 | 32 | 10,64 |
| C110061S | 110x50 | 14 | 17,72 |
| C110063S | 110x75 | 8 | 22,28 |



Reducción CxE

| Código | Diámetro | Empaque | Precio |
|----------|----------|---------|--------|
| C170050S | 75x50 | 120 | 6,57 |
| C170061S | 110x50 | 60 | 9,48 |
| C170063S | 110x75 | 50 | 10,61 |



Tapón Liso

| Código | Diáx esp | Empaque | Precio |
|---------|----------|---------|--------|
| C180018 | 50x1,8 | 500 | 1,55 |
| C180020 | 75x1,8 | 100 | 3,37 |
| C180024 | 110x2,2 | 80 | 7,17 |



Sifón Corto para Placa

| Código | Diámetro | Empaque | Precio |
|----------|----------|---------|--------|
| C370018S | 50 | 70 | 18,35 |



Anillo

| Código | Diáx esp | Empaque | Precio |
|---------|----------|---------|--------|
| C160018 | 50x1,8 | 350 | 2,25 |
| C160020 | 75x1,8 | 120 | 3,65 |
| C160024 | 110x2,2 | 25 | 7,45 |



Sanitaria Reforzada

Tubería Reforzada CxE x 3 mts. (*)



| Código | Diámetro | Espesor | Precio |
|--------|----------|---------|--------|
| T10183 | 50 | 3,2 | 42,18 |
| T10203 | 75 | 3,2 | 65,33 |
| T10243 | 110 | 3,2 | 96,94 |
| T10263 | 160 | 4,0 | 238,27 |

(*) Norma COVENIN 656. Tipo B. Color Naranja

Yee ExCxC

| Código | Diáx esp | Empaque | Precio |
|---------|----------|---------|--------|
| C101018 | 50x3,2 | 80 | 8,05 |
| C101020 | 75x3,2 | 28 | 13,82 |
| C101024 | 110x3,2 | 8 | 31,06 |



Conexiones Sanitaria Reforzada (Color Naranja)

Codo 45 CxE



| Código | Diáx esp | Empaque | Precio |
|---------|----------|---------|--------|
| C011018 | 50x3,2 | 200 | 6,86 |
| C011020 | 75x3,2 | 80 | 12,57 |
| C011024 | 110x3,2 | 35 | 18,77 |

Codo 90 CxE



| Código | Diáx esp | Empaque | Precio |
|---------|----------|---------|--------|
| C021018 | 50x3,2 | 180 | 4,30 |
| C021020 | 75x3,2 | 60 | 7,93 |
| C021024 | 110x3,2 | 24 | 17,46 |

Tee ExCxC



| Código | Diáx esp | Empaque | Precio |
|---------|----------|---------|--------|
| C051018 | 50x3,2 | 100 | 6,86 |
| C051020 | 75x3,2 | 35 | 11,89 |
| C051024 | 110x3,2 | 10 | 24,74 |

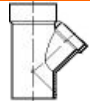
Tee Reducida ExCxC



| Código | Diámetro | Empaque | Precio |
|---------|----------|---------|--------|
| C061050 | 75x50 | 40 | 11,25 |
| C061061 | 110x50 | 14 | 21,65 |
| C061063 | 110x75 | 10 | 25,28 |

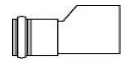
Yee Reducida ExCxC

| Código | Diámetro | Empaque | Precio |
|---------|----------|---------|--------|
| C111050 | 75x50 | 32 | 18,10 |
| C111061 | 110x50 | 14 | 23,67 |
| C111063 | 110x75 | 8 | 30,85 |



Reducción CxE

| Código | Diámetro | Empaque | Precio |
|---------|----------|---------|--------|
| C171050 | 75x50 | 120 | 7,72 |
| C171061 | 110x50 | 60 | 11,09 |
| C171063 | 110x75 | 50 | 12,54 |



Tapón Liso

| Código | Diáx esp | Empaque | Precio |
|---------|----------|---------|--------|
| C181018 | 50x3,2 | 400 | 2,86 |
| C181024 | 110x3,2 | 80 | 16,00 |



Sifón Corto para Placa

| Código | Diámetro | Empaque | Precio |
|---------|----------|---------|--------|
| C371018 | 50 | 70 | 21,65 |



Anillo

| Código | Diámetro | Empaque | Precio |
|---------|----------|---------|--------|
| C161018 | 50x3,2 | 350 | 3,84 |
| C161020 | 75x3,2 | 120 | 10,94 |
| C161024 | 110x3,2 | 25 | 20,16 |





Soldadura PVC Alta Presión



| Código | Envase | Empaque | Precio |
|---------|-----------|---------|--------|
| P4498AP | 1/8 Galón | 24 | 83,57 |
| P4499AP | 1/4 Galón | 12 | 134,55 |

Pegamento Vinílico



| Código | Tamaño | Empaque | Precio |
|--------|-----------|---------|--------|
| P4498V | 1/8 Galón | 24 | 28,20 |
| P4499V | 1/4 Galón | 12 | 48,99 |

Limpiador



| Código | Tamaño | Empaque | Precio |
|--------|-----------|---------|--------|
| P4599L | 1/4 Galón | 12 | 57,93 |

Tubería ExJA Clase AA x 6 mts. (*)



| Código | Diámetro | Espesor | Precio |
|--------|----------|---------|----------|
| T12186 | 50 | 1,8 | 48,28 |
| T12206 | 75 | 2,2 | 85,49 |
| T12246 | 110 | 3,2 | 182,49 |
| T12266 | 160 | 4,7 | 384,98 |
| T12276 | 200 | 5,9 | 600,05 |
| T12286 | 250 | 7,3 | 931,25 |
| T12306 | 315 | 9,2 | 1.477,53 |
| T12326 | 400 | 11,7 | 2.423,84 |

(*)COVENIN 518 (90 psi) 6 kg/cm2. Incluye anillo de goma

Curva 11.25 JAxJA

| Código | Diámetro | Empaque | Precio |
|---------|----------|---------|----------|
| C402418 | 50 | 1 | 39,26 |
| C402420 | 75 | 1 | 86,74 |
| C402424 | 110 | 1 | 258,25 |
| C402426 | 160 | 1 | 770,60 |
| C402427 | 200 | 1 | 1.199,63 |
| C032428 | 250 | 1 | 2.024,38 |
| C032430 | 315 | 1 | 3.365,64 |
| C032432 | 400 | 1 | 4.671,49 |



Tubería ExJA Clase AB x 6 mts. (*)



| Código | Diámetro | Espesor | Precio |
|--------|----------|---------|----------|
| T14186 | 50 | 2,4 | 48,39 |
| T14206 | 75 | 3,6 | 107,04 |
| T14246 | 110 | 5,3 | 226,47 |
| T14266 | 160 | 7,7 | 518,75 |
| T14276 | 200 | 9,6 | 822,64 |
| T14286 | 250 | 11,9 | 1.275,58 |
| T14306 | 315 | 15,0 | 2.026,61 |
| T14326 | 400 | 19,1 | 3.271,22 |

(*)COVENIN 518 (150 psi) 10 kg/cm2. Incluye anillo de goma

Curva 22.50 JAxJA

| Código | Diámetro | Empaque | Precio |
|---------|----------|---------|----------|
| C412418 | 50 | 1 | 39,26 |
| C412420 | 75 | 1 | 86,74 |
| C412424 | 110 | 1 | 258,25 |
| C412426 | 160 | 1 | 770,60 |
| C412427 | 200 | 1 | 1.199,63 |
| C042428 | 250 | 1 | 2.155,59 |
| C042430 | 315 | 1 | 3.628,06 |
| C042432 | 400 | 1 | 4.800,61 |



Tubería ExJA Clase AC x 6 mts. (*)

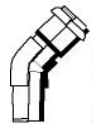


| Código | Diámetro | Espesor | Precio |
|--------|----------|---------|----------|
| T16186 | 50 | 3,7 | 89,15 |
| T16206 | 75 | 5,6 | 200,34 |
| T16246 | 110 | 8,2 | 425,84 |
| T16266 | 160 | 11,9 | 894,69 |
| T16276 | 200 | 14,9 | 1.391,50 |
| T16286 | 250 | 18,6 | 2.180,81 |

(*)COVENIN 518 (227psi) 16 kg/cm2. Incluye anillo de goma

Codo 45 ExJA

| Código | Diámetro | Empaque | Precio |
|---------|----------|---------|----------|
| C012318 | 50 | 1 | 27,18 |
| C012320 | 75 | 1 | 102,05 |
| C012324 | 110 | 1 | 237,43 |
| C012326 | 160 | 1 | 933,05 |
| C012327 | 200 | 1 | 1.135,07 |
| C012328 | 250 | 1 | 2.385,52 |
| C012330 | 315 | 1 | 3.805,09 |
| C012332 | 400 | 1 | 3.995,86 |



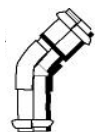
Curva 11.25 ExJA



| Código | Diámetro | Empaque | Precio |
|---------|----------|---------|----------|
| C402318 | 50 | 1 | 33,01 |
| C402320 | 75 | 1 | 73,42 |
| C402324 | 110 | 1 | 222,85 |
| C402326 | 160 | 1 | 683,12 |
| C402327 | 200 | 1 | 1.062,17 |
| C032328 | 250 | 1 | 1.664,07 |
| C032330 | 315 | 1 | 2.986,59 |
| C032332 | 400 | 1 | 4.096,66 |

Codo 45 JAxJA

| Código | Diámetro | Empaque | Precio |
|---------|----------|---------|----------|
| C012418 | 50 | 1 | 30,82 |
| C012420 | 75 | 1 | 105,07 |
| C012424 | 110 | 1 | 247,84 |
| C012426 | 160 | 1 | 989,28 |
| C012427 | 200 | 1 | 1.212,13 |
| C012428 | 250 | 1 | 2.545,99 |
| C012430 | 315 | 1 | 4.057,09 |
| C012432 | 400 | 1 | 4.279,94 |



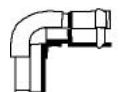
Curva 22.50 ExJA



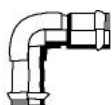
| Código | Diámetro | Empaque | Precio |
|---------|----------|---------|----------|
| C412318 | 50 | 1 | 33,01 |
| C412320 | 75 | 1 | 73,42 |
| C412324 | 110 | 1 | 222,85 |
| C412326 | 160 | 1 | 683,12 |
| C412327 | 200 | 1 | 1.062,17 |
| C042328 | 250 | 1 | 1.795,28 |
| C042330 | 315 | 1 | 3.117,80 |
| C042332 | 400 | 1 | 4.225,79 |

Codo 90 ExJA

| Código | Diámetro | Empaque | Precio |
|---------|----------|---------|----------|
| C022318 | 50 | 1 | 18,74 |
| C022320 | 75 | 1 | 62,90 |
| C022324 | 110 | 1 | 155,89 |
| C022326 | 160 | 1 | 551,91 |
| C022327 | 200 | 1 | 993,45 |
| C022328 | 250 | 1 | 2.762,90 |
| C022330 | 315 | 1 | 5.362,94 |
| C022332 | 400 | 1 | 4.552,77 |



Codo 90 JAxJA



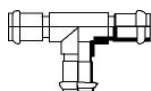
| Código | Diámetro | Empaque | Precio |
|---------|----------|---------|----------|
| C022418 | 50 | 1 | 21,76 |
| C022420 | 75 | 1 | 70,50 |
| C022424 | 110 | 1 | 172,13 |
| C022426 | 160 | 1 | 737,27 |
| C022427 | 200 | 1 | 966,37 |
| C022428 | 250 | 1 | 2.943,89 |
| C022430 | 315 | 1 | 5.714,40 |
| C022432 | 400 | 1 | 5.192,16 |

Reducción ExE

| Código | Diámetro | Empaque | Precio |
|---------|----------|---------|----------|
| C172150 | 75x50 | 1 | 51,55 |
| C172163 | 110x75 | 1 | 107,57 |
| C172173 | 160x110 | 1 | 256,17 |
| C172180 | 200x160 | 1 | 354,06 |
| C172183 | 250x200 | 1 | 762,27 |
| C172187 | 315x250 | 1 | 1.380,83 |
| C172195 | 400x315 | 1 | 2.447,17 |



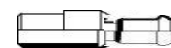
Tee JAxJAxJA



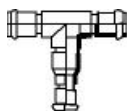
| Código | Diámetro | Empaque | Precio |
|---------|----------|---------|----------|
| C052418 | 50 | 1 | 41,03 |
| C052420 | 75 | 1 | 89,76 |
| C052424 | 110 | 1 | 222,85 |
| C052426 | 160 | 1 | 708,12 |
| C052427 | 200 | 1 | 1.287,11 |
| C052428 | 250 | 1 | 3.264,63 |
| C052430 | 315 | 1 | 6.677,64 |
| C052432 | 400 | 1 | 6.550,08 |

Reducción ExJA

| Código | Diámetro | Empaque | Precio |
|---------|----------|---------|----------|
| C172350 | 75x50 | 1 | 55,82 |
| C172363 | 110x75 | 1 | 116,42 |
| C172373 | 160x110 | 1 | 277,00 |
| C172380 | 200x160 | 1 | 383,22 |
| C172383 | 250x200 | 1 | 814,33 |
| C172387 | 315x250 | 1 | 1.472,47 |
| C172395 | 400x315 | 1 | 2.603,37 |



Tee Reducida JAxJAxJA



| Código | Diámetro | Empaque | Precio |
|---------|----------|---------|----------|
| C062450 | 75x50 | 1 | 125,69 |
| C062463 | 110x75 | 1 | 335,31 |
| C062473 | 160x110 | 1 | 1.187,14 |
| C062480 | 200x160 | 1 | 1.553,69 |
| C062483 | 250x200 | 1 | 5.190,08 |
| C062487 | 315x250 | 1 | 8.757,74 |
| C062495 | 400x315 | 1 | 9.940,71 |

Reducción ExCPS

| Código | Diámetro | Empaque | Precio |
|---------|----------|---------|----------|
| C172250 | 75x50 | 1 | 43,11 |
| C172263 | 110x75 | 1 | 89,97 |
| C172273 | 160x110 | 1 | 216,60 |
| C172280 | 200x160 | 1 | 308,24 |
| C172283 | 250x200 | 1 | 639,39 |
| C172287 | 315x250 | 1 | 1.147,57 |
| C172295 | 400x315 | 1 | 2.041,04 |



Manchón Unión JAxJA



| Código | Diámetro | Empaque | Precio |
|---------|----------|---------|----------|
| C262418 | 50 | 1 | 18,43 |
| C262420 | 75 | 1 | 41,13 |
| C262424 | 110 | 1 | 89,35 |
| C262426 | 160 | 1 | 198,90 |
| C262427 | 200 | 1 | 318,65 |
| C262428 | 250 | 1 | 610,23 |
| C262430 | 315 | 1 | 1.091,33 |
| C262432 | 400 | 1 | 1.816,11 |

Tapon Hembra CPS

| Código | Diámetro | Empaque | Precio |
|---------|----------|---------|--------|
| C212018 | 50 | 1 | 9,06 |
| C212020 | 75 | 1 | 25,41 |
| C212024 | 110 | 1 | 55,61 |



Manchón Reparación Deslizante



| Código | Diámetro | Empaque | Precio |
|---------|----------|---------|--------|
| C322018 | 50 | 1 | 51,65 |
| C322020 | 75 | 1 | 92,58 |
| C322024 | 110 | 1 | 159,01 |
| C322026 | 160 | 1 | 216,60 |

Abrazaderas Simples Rosca Hembra

| Código | Diámetro | Empaque | Precio |
|---------|----------|---------|--------|
| C362046 | 50x1/2" | 1 | 17,29 |
| C362047 | 50x3/4" | 1 | 17,29 |
| C362048 | 50x1" | 1 | 17,29 |
| C362052 | 75x1/2" | 1 | 25,72 |
| C362053 | 75x3/4" | 1 | 25,72 |
| C362054 | 75x1" | 1 | 25,72 |
| C362066 | 110x1/2" | 1 | 45,19 |
| C362067 | 110x3/4" | 1 | 45,19 |
| C362068 | 110x1" | 1 | 45,19 |
| C362074 | 160x1/2" | 1 | 156,10 |
| C362075 | 160x3/4" | 1 | 156,10 |
| C362076 | 160x1" | 1 | 156,10 |

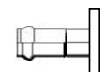


Extremidad Espiga - Brida



| Código | Diámetro | Empaque | Precio |
|---------|----------|---------|----------|
| C272918 | 50 | 1 | 42,38 |
| C272920 | 75 | 1 | 58,73 |
| C272924 | 110 | 1 | 114,13 |
| C272926 | 160 | 1 | 186,82 |
| C272927 | 200 | 1 | 337,40 |
| C272928 | 250 | 1 | 643,55 |
| C272930 | 315 | 1 | 1.089,25 |
| C272932 | 400 | 1 | 1.603,68 |

Extremidad JA - Brida



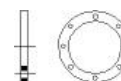
| Código | Diámetro | Empaque | Precio |
|---------|----------|---------|----------|
| C273318 | 50 | 1 | 48,74 |
| C273320 | 75 | 1 | 66,23 |
| C273324 | 110 | 1 | 129,44 |
| C273326 | 160 | 1 | 256,17 |
| C273327 | 200 | 1 | 456,11 |
| C273328 | 250 | 1 | 739,36 |
| C273330 | 315 | 1 | 1.245,45 |
| C273332 | 400 | 1 | 1.870,26 |

Tapon JAxBC (Incluye Brida Ciega)



| Código | Diámetro | Empaque | Precio |
|---------|----------|---------|----------|
| C303326 | 160 | 1 | 445,70 |
| C303327 | 200 | 1 | 616,48 |
| C303328 | 250 | 1 | 1.141,32 |
| C303330 | 315 | 1 | 1.724,47 |
| C303332 | 400 | 1 | 2.528,39 |

Brida Loca



| Código | Diámetro | Empaque | Precio |
|----------|----------|---------|--------|
| C282018D | 50 | 1 | 39,88 |
| C282020D | 75 | 1 | 58,73 |
| C282024D | 110 | 1 | 91,33 |
| C282026D | 160 | 1 | 136,94 |
| C282027D | 200 | 1 | 247,84 |
| C282028D | 250 | 1 | 418,62 |
| C282030D | 315 | 1 | 678,96 |
| C282032D | 400 | 1 | 712,28 |

Anillos de Goma



| Código | Diámetro | Empaque | Precio |
|---------|----------|---------|--------|
| G432418 | 50 | 1 | 3,08 |
| G432420 | 75 | 1 | 5,43 |
| G432424 | 110 | 1 | 11,29 |
| G432426 | 160 | 1 | 16,86 |
| G432427 | 200 | 1 | 23,90 |
| G432428 | 250 | 1 | 41,79 |
| G432430 | 315 | 1 | 65,11 |
| G432432 | 400 | 1 | 145,47 |

Adaptador PVC/ CPS-HG Rosca



| Código | Diámetro | Empaque | Precio |
|---------|------------|---------|--------|
| C343818 | 50x 1 1/2" | 1 | 10,73 |
| C343820 | 75x 2 1/2" | 1 | 31,97 |
| C343824 | 110x4" | 1 | 44,15 |
| C343826 | 160x6" | 1 | 117,36 |

Tubería ExJA x 3 mts. (*)



| Código | Diámetro | Espesor | Precio |
|--------|----------|---------|--------|
| T27263 | 160 | 3,2 | 123,95 |
| T27273 | 200 | 4,0 | 193,96 |
| T27283 | 250 | 4,9 | 301,52 |
| T27303 | 315 | 6,2 | 485,67 |
| T27323 | 400 | 7,9 | 793,26 |

(*)Norma DIN 19534

Tubería ExJA x 6 mts. (*)



| Código | Diámetro | Espesor | Precio |
|--------|----------|---------|----------|
| T27266 | 160 | 3,2 | 254,19 |
| T27276 | 200 | 4,0 | 393,03 |
| T27286 | 250 | 4,9 | 600,23 |
| T27306 | 315 | 6,2 | 965,49 |
| T27326 | 400 | 7,9 | 1.555,04 |

(*)Norma DIN 19534

Silla Yee JA



| Código | Diámetro | Empaque | Precio |
|---------|----------|---------|--------|
| C460080 | 200x160 | 1 | 105,95 |
| C460082 | 250x160 | 1 | 124,55 |
| C460085 | 315x160 | 1 | 138,80 |
| C460092 | 400x160 | 1 | 150,09 |

Silla Yee CPS



| Código | Diámetro | Empaque | Precio |
|---------|----------|---------|--------|
| C738780 | 200x160 | 1 | 67,25 |
| C738782 | 250x160 | 1 | 104,26 |
| C530085 | 315x160 | 1 | 114,92 |
| C530092 | 400x160 | 1 | 141,68 |

Anillos de Goma



| Código | Diámetro | Espesor | Precio |
|---------|----------|---------|--------|
| G432426 | 160 | 1 | 16,86 |
| G432427 | 200 | 1 | 23,90 |
| G432428 | 250 | 1 | 41,79 |
| G432430 | 315 | 1 | 65,11 |
| G432432 | 400 | 1 | 145,47 |

Codo 45 ExJA



| Código | Diámetro | Empaque | Precio |
|---------|----------|---------|--------|
| C015326 | 160 | 1 | 44,14 |

Codo 45 ExCPS



| Código | Diámetro | Empaque | Precio |
|---------|----------|---------|--------|
| C010026 | 160 | 1 | 23,08 |

Tubería CxE x 6 mts (EDC)(*)



| Código | Diámetro | Empaque | Precio |
|---------|----------|---------|--------|
| T26336 | 2" | 1 | 54,12 |
| T261236 | 4" | 1 | 136,62 |
| T261246 | 5" | 1 | 255,49 |

(*)Norma Electricidad de Caracas

Tubería ExC x 6 mts (DB60)(*)



| Código | Diámetro | Empaque | Precio |
|---------|----------|---------|--------|
| T26336 | 2" | 1 | 54,12 |
| T341236 | 4" | 1 | 206,73 |
| T34916 | 6" | 1 | 403,71 |

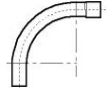
(*)Norma COVENIN 3641 - ASTM F-512

Curva 90 (EDC)



| Código | Diámetro | Empaque | Precio |
|----------|----------|---------|--------|
| C2389170 | 2" | 1 | 15,15 |
| C2389123 | 4" | 1 | 68,43 |
| C2389124 | 5" | 1 | 75,86 |

Curva 90 (DB60)



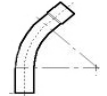
| Código | Diámetro | Empaque | Precio |
|----------|----------|---------|--------|
| C2389170 | 2" | 1 | 15,15 |
| C238923 | 4" | 1 | 75,27 |
| C238991 | 6" | 1 | 147,32 |

Curva 45 (EDC)



| Código | Diámetro | Empaque | Precio |
|----------|----------|---------|--------|
| C2390170 | 2" | 1 | 15,15 |
| C2390123 | 4" | 1 | 68,43 |
| C2390124 | 5" | 1 | 75,86 |

Curva 45 (DB60)



| Código | Diámetro | Empaque | Precio |
|----------|----------|---------|--------|
| C2390170 | 2" | 1 | 15,15 |
| C239023 | 4" | 1 | 75,27 |
| C239091 | 6" | 1 | 147,32 |

Adaptador Terminal Campana (EDC)



| Código | Diámetro | Empaque | Precio |
|----------|----------|---------|--------|
| C2508174 | 2" | 1 | 5,18 |
| C2508123 | 4" | 1 | 13,39 |
| C2508124 | 5" | 1 | 21,41 |

Adaptador Terminal Campana (DB60)



| Código | Diámetro | Empaque | Precio |
|----------|----------|---------|--------|
| C2508174 | 2" | 1 | 5,18 |
| C420850 | 4" | 1 | 60,42 |
| C420833 | 6" | 1 | 114,08 |

Tubería CxE x 6 mts (SCH40)(*)



| Código | Diámetro | Empaque | Precio |
|---------|----------|---------|--------|
| T20906 | 2" | 1 | 110,09 |
| T201236 | 4" | 1 | 315,95 |
| T20916 | 6" | 1 | 565,59 |

(*)Norma NEMA TC 2

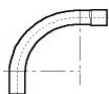
Tubería CxE x 3 mts (SCH40)(*)



| Código | Diámetro | Empaque | Precio |
|---------|----------|---------|--------|
| T20903 | 2" | 1 | 55,10 |
| T201233 | 4" | 1 | 157,19 |
| T20913 | 6" | 1 | 284,74 |

(*)Norma NEMA TC 2

Curva 90 (SCH40)



| Código | Diámetro | Empaque | Precio |
|---------|----------|---------|--------|
| C232090 | 2" | 1 | 32,35 |
| C232023 | 4" | 1 | 113,05 |
| C232091 | 6" | 1 | 262,22 |

Adaptador Terminal Campana (SCH40)



| Código | Diámetro | Empaque | Precio |
|---------|----------|---------|--------|
| C259251 | 2" | 1 | 12,51 |
| C259250 | 4" | 1 | 29,15 |
| C259252 | 6" | 1 | 93,46 |

Curva 45 (SCH40)



| Código | Diámetro | Empaque | Precio |
|---------|----------|---------|--------|
| C232190 | 2" | 1 | 32,35 |
| C232123 | 4" | 1 | 113,05 |
| C232191 | 6" | 1 | 262,22 |

Anillo Unión (SCH40)



| Código | Diámetro | Empaque | Precio |
|----------|----------|---------|--------|
| C162090 | 2" | 1 | 44,38 |
| C1620123 | 4" | 1 | 70,97 |
| C162091 | 6" | 1 | 113,99 |